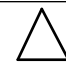
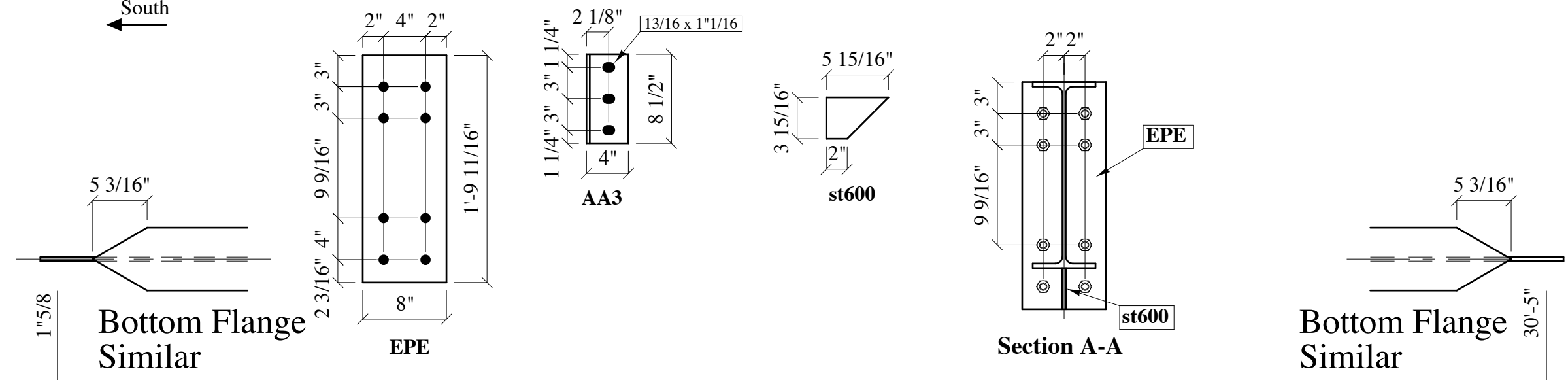
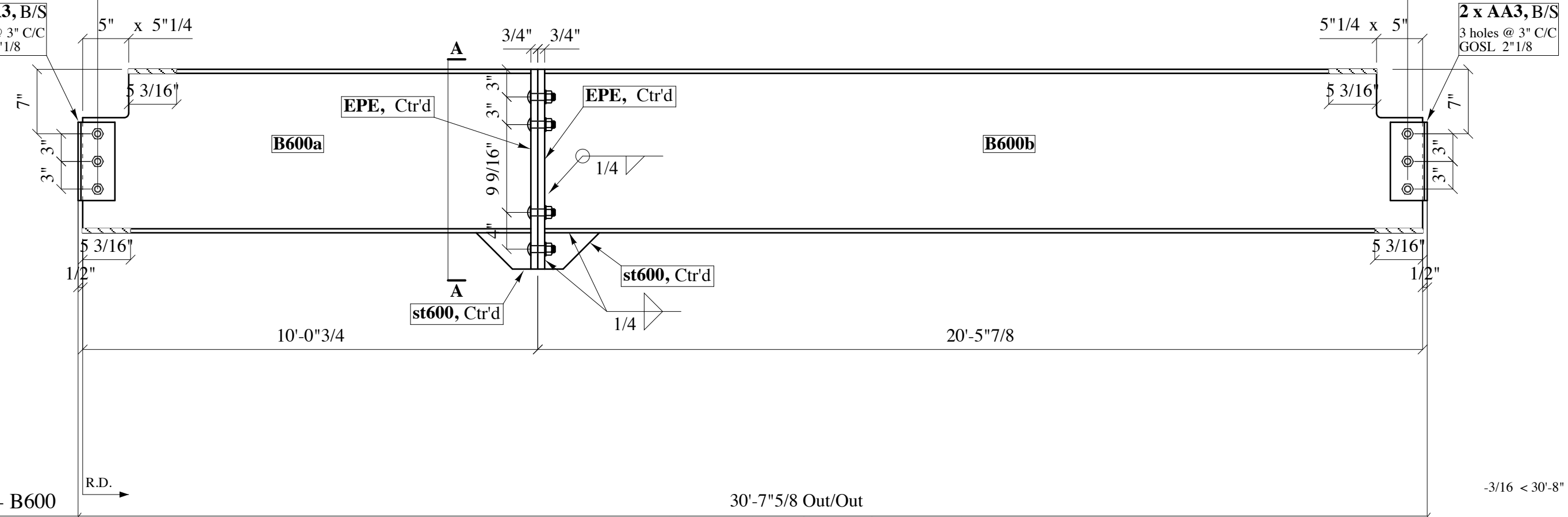


Mark	Qty	Description	Length	Weight	ABM	Mark	Qty	Description	Length	Weight	ABM	Field Bolts	Drawn by	Cleaned <input type="checkbox"/>	Checked	Project	Contract	Div:	
B600	1	W18x35 (Field Splice)										Qty	Description	MJM	Modified <input type="checkbox"/>	JTM			<b>B600</b> 
B600a	1	W18x35	10'-0"											Paint /Surface spec. (x1) Coat Grey Primer	Std Hole 13/16 Dia. U/N	<b>Livingston Steel Inc.</b> 21 Ottawa St., Summerside, PEI			
B600b	1	W18x35	20'-5"1/8											Steel / Steel Class CSA STANDARDS G40.21-50W	Weld METAL CORE				
EPE	2	MF8x3/4	1'-9"11/16											Weight:	Date:				
AA3	4	ML4x2"1/2x5/16	8"1/2																
st600	2	PL3/8 x 3"15/16	5"15/16																
												Ref:				Title <b>PolyCello Extrusion Tower</b>			
												#				Description			
												Date				By			

South  
←



2 x AA3, B/S  
3 holes @ 3" C/C  
GOSL 2"1/8



ONE - B600

30'-7"5/8 Out/Out

W 17"3/4 x (6" x 7/16) x 5/16 @ 35.00 (K=1"1/8)

-3/16 < 30'-8" > -3/16